

---

## Product Datasheet

### UBE2N Antibody (orb1243635)

**Description**

UBE2N Antibody

**Species/Host**

Rabbit

**Reactivity**

Canine, Drosophila, Human, Mouse, Rat, Zebrafish

**Conjugation**

Unconjugated

**Tested**

ELISA, WB

**Applications**
**Immunogen**

Antibody produced in rabbits immunized with a synthetic peptide corresponding a region of human UBE2N.

**Target**

UBE2N

**Preservatives**

Purified antibody supplied in 1x PBS buffer with 0.09% (w/v) sodium azide and 2% sucrose.

**Form/Appearance**

Liquid

**Concentration**

batch dependent

**Storage**

For short periods of storage (days) store at 4°C. For longer periods of storage, store UBE2N antibody at -20°C. As with any antibody avoid repeat freeze-thaw cycles.

**Note**

For research use only

**Application notes**

UBE2N antibody can be used for detection of UBE2N by ELISA at 1:1562500. UBE2N antibody can be used for detection of UBE2N by western blot at 2.5 µg/mL, and HRP conjugated secondary antibody should be diluted 1:50,000 - 100,000.

**Clonality**

Polyclonal

**MW**

17 kDa

**Uniprot ID**
[P61088](#)
**NCBI**
[NP\\_003339](#)
**Dilution Range**

UBE2N antibody can be used for detection of UBE2N by ELISA at 1:1562500. UBE2N antibody can be used for detection of UBE2N by western blot at 2.5 µg/mL, and HRP conjugated secondary antibody should be diluted 1:50,000 - 100,000.

**Expiration Date**

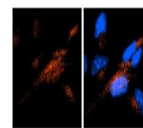
12 months from date of receipt.





Antibody used in WB on Human Jurkat cell...

UBE2N


 Antibody-RED  
DAPI-Blue

See HCS-1 Data and Customer Feedback for more information

Antibody used in IHC on Mouse brainstem ...

UBE2N

1 2















































