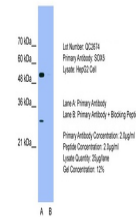

Product Datasheet

SOX5 Antibody (orb1243602)

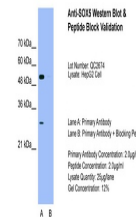
Description	SOX5 Antibody
Species/Host	Rabbit
Reactivity	Canine, Human, Rat
Conjugation	Unconjugated
Tested Applications	ELISA, IHC, WB
Immunogen	Antibody produced in rabbits immunized with a synthetic peptide corresponding a region of human SOX5.
Target	SOX5
Preservatives	Purified antibody supplied in 1x PBS buffer with 0.09% (w/v) sodium azide and 2% sucrose.
Form/Appearance	Liquid
Concentration	batch dependent
Storage	For short periods of storage (days) store at 4°C. For longer periods of storage, store SOX5 antibody at -20°C. As with any antibody avoid repeat freeze-thaw cycles.
Note	For research use only
Application notes	SOX5 antibody can be used for detection of SOX5 by ELISA at 1:62500. SOX5 antibody can be used for detection of SOX5 by western blot at 0.5 µg/mL, and HRP conjugated secondary antibody should be diluted 1:50,000 - 100,000.
Clonality	Polyclonal
MW	42 kDa
Uniprot ID	P35711
NCBI	NP_821078
Dilution Range	SOX5 antibody can be used for detection of SOX5 by ELISA at 1:62500. SOX5 antibody can be used for detection of SOX5 by western blot at 0.5 µg/mL, and HRP conjugated secondary antibody should be diluted 1:50,000 - 100,000.
Expiration Date	12 months from date of receipt.



Antibody used in WB on Human HeLa at 0.2...



Antibody used in WB on Human HepG2 at 2....



Antibody used in WB on HepG2 at 2.0 ug/m...