
Product Datasheet

RPS16 Antibody (orb1243551)

Description

RPS16 Antibody

Species/Host

Rabbit

Reactivity

Canine, Human, Mouse, Rat, Zebrafish

Conjugation

Unconjugated

Tested Applications

ELISA, IHC, WB

Immunogen

Antibody produced in rabbits immunized with a synthetic peptide corresponding a region of human RPS16.

Target

RPS16

Preservatives

Purified antibody supplied in 1x PBS buffer with 0.09% (w/v) sodium azide and 2% sucrose.

Form/Appearance

Liquid

Concentration

batch dependent

Storage

For short periods of storage (days) store at 4°C. For longer periods of storage, store RPS16 antibody at -20°C. As with any antibody avoid repeat freeze-thaw cycles.

Note

For research use only

Application notes

RPS16 antibody can be used for detection of RPS16 by ELISA at 1:62500. RPS16 antibody can be used for detection of RPS16 by western blot at 1.25 µg/mL, and HRP conjugated secondary antibody should be diluted 1:50,000 - 100,000.

Clonality

Polyclonal

MW

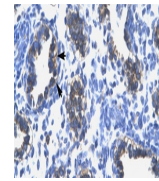
16 kDa

Uniprot ID
[P17008](#)
NCBI
[NP_001011](#)
Dilution Range

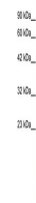
RPS16 antibody can be used for detection of RPS16 by ELISA at 1:62500. RPS16 antibody can be used for detection of RPS16 by western blot at 1.25 µg/mL, and HRP conjugated secondary antibody should be diluted 1:50,000 - 100,000.

Expiration Date

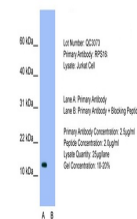
12 months from date of receipt.



Antibody used in IHC on Human Lung.



Antibody used in WB on Human Jurkat 1.25...



Antibody used in WB on Human Jurkat 2.5 ...