

---

## Product Datasheet

### NR1H4 Antibody (orb1243513)

**Description**

NR1H4 Antibody

**Species/Host**

Rabbit

**Reactivity**

Canine, Human, Mouse, Rat

**Conjugation**

Unconjugated

**Tested**

ELISA, IHC, WB

**Applications**
**Immunogen**

Antibody produced in rabbits immunized with a synthetic peptide corresponding a region of human NR1H4.

**Target**

NR1H4

**Preservatives**

Purified antibody supplied in 1x PBS buffer with 0.09% (w/v) sodium azide and 2% sucrose.

**Form/Appearance**

Liquid

**Concentration**

batch dependent

**Storage**

For short periods of storage (days) store at 4°C. For longer periods of storage, store NR1H4 antibody at -20°C. As with any antibody avoid repeat freeze-thaw cycles.

**Note**

For research use only

**Application notes**

NR1H4 antibody can be used for detection of NR1H4 by ELISA at 1:312500. NR1H4 antibody can be used for detection of NR1H4 by western blot at 0.5 µg/mL, and HRP conjugated secondary antibody should be diluted 1:50,000 - 100,000.

**Clonality**

Polyclonal

**MW**

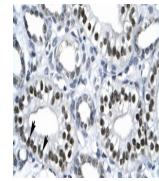
54 kDa

**Uniprot ID**
[Q96R11](#)
**NCBI**
[NP\\_005114](#)
**Dilution Range**

NR1H4 antibody can be used for detection of NR1H4 by ELISA at 1:312500. NR1H4 antibody can be used for detection of NR1H4 by western blot at 0.5 µg/mL, and HRP conjugated secondary antibody should be diluted 1:50,000 - 100,000.

**Expiration Date**

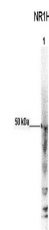
12 months from date of receipt.



Antibody used in IHC on Human kidney.



Antibody used in WB on Human Lung at 0.2...



Antibody used in WB on mouse glomerular ...