

---

## Product Datasheet

### PARP2 Antibody (orb1243492)

**Description**

PARP2 Antibody

PARP2

**Species/Host**

Rabbit

**Reactivity**

Human

**Conjugation**

Unconjugated

**Tested**

ELISA, WB

**Applications**
**Immunogen**

Antibody produced in rabbits immunized with a synthetic peptide corresponding a region of human PARP2.

**Target**

PARP2

**Preservatives**

Purified antibody supplied in 1x PBS buffer with 0.09% (w/v) sodium azide and 2% sucrose.

**Form/Appearance**

Liquid

**Concentration**

batch dependent

**Storage**

For short periods of storage (days) store at 4°C. For longer periods of storage, store PARP2 antibody at -20°C. As with any antibody avoid repeat freeze-thaw cycles.

**Note**

For research use only

**Application notes**

PARP2 antibody can be used for detection of PARP2 by ELISA at 1:62500. PARP2 antibody can be used for detection of PARP2 by western blot at 1.6 µg/mL, and HRP conjugated secondary antibody should be diluted 1:50,000 - 100,000.

**Clonality**

Polyclonal

**MW**

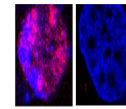
61 kDa

**Uniprot ID**
[Q9UGN5](#)
**NCBI**
[NP\\_005475](#)
**Dilution Range**

PARP2 antibody can be used for detection of PARP2 by ELISA at 1:62500. PARP2 antibody can be used for detection of PARP2 by western blot at 1.6 µg/mL, and HRP conjugated secondary antibody should be diluted 1:50,000 - 100,000.

**Expiration Date**

12 months from date of receipt.


 Red: PARP2  
Blue: DAPI

Antibody used in IF on Rat thymocytes-FR...



Antibody used in WB on Human Raji cells ...