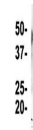

Product Datasheet

CNP Antibody (orb1243462)

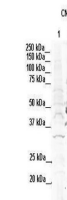
Description	CNP Antibody
Species/Host	Rabbit
Reactivity	Human
Conjugation	Unconjugated
Tested Applications	ELISA, WB
Immunogen	Antibody produced in rabbits immunized with a synthetic peptide corresponding a region of human CNP.
Target	CNP
Preservatives	Purified antibody supplied in 1x PBS buffer with 0.09% (w/v) sodium azide and 2% sucrose.
Form/Appearance	Liquid
Concentration	batch dependent
Storage	For short periods of storage (days) store at 4°C. For longer periods of storage, store CNP antibody at -20°C. As with any antibody avoid repeat freeze-thaw cycles.
Note	For research use only
Application notes	CNP antibody can be used for detection of CNP by ELISA at 1:62500. CNP antibody can be used for detection of CNP by western blot at 1.25 µg/mL, and HRP conjugated secondary antibody should be diluted 1:50,000 - 100,000.
Clonality	Polyclonal
MW	45 kDa
Uniprot ID	P09543
NCBI	NP_149124
Dilution Range	CNP antibody can be used for detection of CNP by ELISA at 1:62500. CNP antibody can be used for detection of CNP by western blot at 1.25 µg/mL, and HRP conjugated secondary antibody should be diluted 1:50,000 - 100,000.
Expiration Date	12 months from date of receipt.

CNP



See the Application Table and Customer Feedback for more information

Antibody used in IP on Mouse Brain.



See Immunoblot Data and Customer Feedback for more information

Antibody used in WB on Human NT-2, Rat b...



Antibody used in WB on Human Jurkat 1.25...