

---

## Product Datasheet

### UBE2N Antibody (orb1243436)

**Description**

UBE2N Antibody

UBE2N

**Species/Host**

Rabbit

**Reactivity**

Canine, Drosophila, Human, Mouse, Rat, Zebrafish

**Conjugation**

Unconjugated

**Tested Applications**

ELISA, WB

**Immunogen**

Antibody produced in rabbits immunized with a synthetic peptide corresponding a region of human UBE2N.

**Target**

UBE2N

**Preservatives**

Purified antibody supplied in 1x PBS buffer with 0.09% (w/v) sodium azide and 2% sucrose.

**Form/Appearance**

Liquid

**Concentration**

batch dependent

**Storage**

For short periods of storage (days) store at 4°C. For longer periods of storage, store UBE2N antibody at -20°C. As with any antibody avoid repeat freeze-thaw cycles.

**Note**

For research use only

**Application notes**

UBE2N antibody can be used for detection of UBE2N by ELISA at 1:312500. UBE2N antibody can be used for detection of UBE2N by western blot at 1.25 µg/mL, and HRP conjugated secondary antibody should be diluted 1:50,000 - 100,000.

**Clonality**

Polyclonal

**MW**

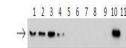
17 kDa

**Uniprot ID**
[P61088](#)
**NCBI**
[NP\\_003339](#)
**Dilution Range**

UBE2N antibody can be used for detection of UBE2N by ELISA at 1:312500. UBE2N antibody can be used for detection of UBE2N by western blot at 1.25 µg/mL, and HRP conjugated secondary antibody should be diluted 1:50,000 - 100,000.

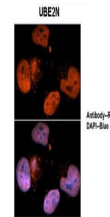
**Expiration Date**

12 months from date of receipt.



See Immunoblot 3 Data and customer Feedback for more information

Antibody used in WB on r-UBE2N at 1:500 ...



See IFC 1 Data and Customer Feedback for more information

Antibody used in IHC on Human brainstem ...



Antibody used in WB on Human HepG2 cells...