
Product Datasheet

AKAP17A Antibody (orb1243402)

Description

AKAP17A Antibody

Species/Host

Rabbit

Reactivity

Canine, Human

Conjugation

Unconjugated

Tested

ELISA, IHC, WB

Applications
Immunogen

Antibody produced in rabbits immunized with a synthetic peptide corresponding a region of human DXYS155E.

Target

AKAP17A

Preservatives

Purified antibody supplied in 1x PBS buffer with 0.09% (w/v) sodium azide and 2% sucrose.

Form/Appearance

Liquid

Concentration

batch dependent

Storage

For short periods of storage (days) store at 4°C. For longer periods of storage, store DXYS155E antibody at -20°C. As with any antibody avoid repeat freeze-thaw cycles.

Note

For research use only

Application notes

DXYS155E antibody can be used for detection of DXYS155E by ELISA at 1:312500. DXYS155E antibody can be used for detection of DXYS155E by western blot at 0.5 µg/mL, and HRP conjugated secondary antibody should be diluted 1:50,000 - 100,000.

Clonality

Polyclonal

MW

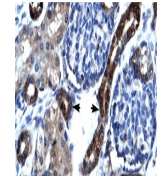
81 kDa

Uniprot ID
[Q8N6U9](#)
NCBI
[NP_005079](#)
Dilution Range

DXYS155E antibody can be used for detection of DXYS155E by ELISA at 1:312500. DXYS155E antibody can be used for detection of DXYS155E by western blot at 0.5 µg/mL, and HRP conjugated secondary antibody should be diluted 1:50,000 - 100,000.

Expiration Date

12 months from date of receipt.



Antibody used in IHC on Human kidney.



Antibody used in WB on Human Jurkat 0.2-...