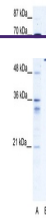
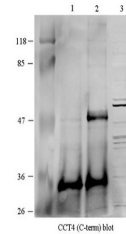

Product Datasheet

CCT4 Antibody (orb1243394)

Description	CCT4 Antibody
Species/Host	Rabbit
Reactivity	Human
Conjugation	Unconjugated
Tested Applications	ELISA, WB
Immunogen	Antibody produced in rabbits immunized with a synthetic peptide corresponding a region of human CCT4.
Target	CCT4
Preservatives	Purified antibody supplied in 1x PBS buffer with 0.09% (w/v) sodium azide and 2% sucrose.
Form/Appearance	Liquid
Concentration	batch dependent
Storage	For short periods of storage (days) store at 4°C. For longer periods of storage, store CCT4 antibody at -20°C. As with any antibody avoid repeat freeze-thaw cycles.
Note	For research use only
Application notes	CCT4 antibody can be used for detection of CCT4 by ELISA at 1:312500. CCT4 antibody can be used for detection of CCT4 by western blot at 1.25 µg/mL, and HRP conjugated secondary antibody should be diluted 1:50,000 - 100,000.
Clonality	Polyclonal
MW	58 kDa
Uniprot ID	Q53QP9
NCBI	NP_006421
Dilution Range	CCT4 antibody can be used for detection of CCT4 by ELISA at 1:312500. CCT4 antibody can be used for detection of CCT4 by western blot at 1.25 µg/mL, and HRP conjugated secondary antibody should be diluted 1:50,000 - 100,000.
Expiration Date	12 months from date of receipt.

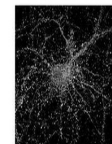


Antibody used in WB on Human 293T.



Antibody used in WB on Human HEK293T at ...

CCT4



WNA: CCT4

See IF-1 Data and Customer Feedback for more information.

Antibody used in IHC on Rat Hippocampal ...