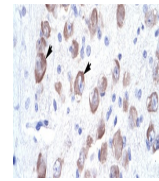

Product Datasheet

LARP1 Antibody (orb1243319)

Description	LARP1 Antibody
Species/Host	Rabbit
Reactivity	Canine, Human, Rat
Conjugation	Unconjugated
Tested Applications	ELISA, IHC, WB
Immunogen	Antibody produced in rabbits immunized with a synthetic peptide corresponding a region of human LARP2.
Target	LARP1
Preservatives	Purified antibody supplied in 1x PBS buffer with 0.09% (w/v) sodium azide and 2% sucrose.
Form/Appearance	Liquid
Concentration	batch dependent
Storage	For short periods of storage (days) store at 4°C. For longer periods of storage, store LARP2 antibody at -20°C. As with any antibody avoid repeat freeze-thaw cycles.
Note	For research use only
Application notes	LARP2 antibody can be used for detection of LARP2 by ELISA at 1:62500. LARP2 antibody can be used for detection of LARP2 by western blot at 5.0 µg/mL, and HRP conjugated secondary antibody should be diluted 1:50,000 - 100,000.
Clonality	Polyclonal
MW	116 kDa
Uniprot ID	Q6PKG0
NCBI	NP_056130
Dilution Range	LARP2 antibody can be used for detection of LARP2 by ELISA at 1:62500. LARP2 antibody can be used for detection of LARP2 by western blot at 5.0 µg/mL, and HRP conjugated secondary antibody should be diluted 1:50,000 - 100,000.
Expiration Date	12 months from date of receipt.



Antibody used in IHC on Human Brain.



Antibody used in WB on Human HepG2 cells...