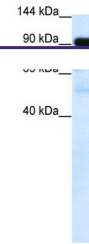

Product Datasheet

SUV420H1 Antibody (orb1243307)

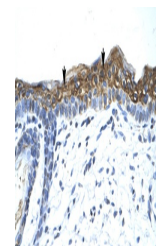
Description	SUV420H1 Antibody
Species/Host	Rabbit
Reactivity	Human
Conjugation	Unconjugated
Tested Applications	ELISA, WB
Immunogen	Antibody produced in rabbits immunized with a synthetic peptide corresponding a region of human SUV420H1.
Target	SUV420H1
Preservatives	Purified antibody supplied in 1x PBS buffer with 0.09% (w/v) sodium azide and 2% sucrose.
Form/Appearance	Liquid
Concentration	batch dependent
Storage	For short periods of storage (days) store at 4°C. For longer periods of storage, store SUV420H1 antibody at -20°C. As with any antibody avoid repeat freeze-thaw cycles.
Note	For research use only
Application notes	SUV420H1 antibody can be used for detection of SUV420H1 by ELISA at 1:1562500. SUV420H1 antibody can be used for detection of SUV420H1 by western blot at 1 µg/mL, and HRP conjugated secondary antibody should be diluted 1:50,000 - 100,000.
Clonality	Polyclonal
MW	51 kDa
Uniprot ID	Q4FZB7
NCBI	AAH98121
Dilution Range	SUV420H1 antibody can be used for detection of SUV420H1 by ELISA at 1:1562500. SUV420H1 antibody can be used for detection of SUV420H1 by western blot at 1 µg/mL, and HRP conjugated secondary antibody should be diluted 1:50,000 - 100,000.
Expiration Date	12 months from date of receipt.



Antibody used in WB on Human Placenta at...



Antibody used in WB on Human Jurkat 1.25...



Antibody used in IHC on Human Skin at 4....