
Product Datasheet

SUV420H1 Antibody (orb1243306)

Description

SUV420H1 Antibody

Species/Host

Rabbit

Reactivity

Human

Conjugation

Unconjugated

Tested

ELISA, WB

Applications
Immunogen

Antibody produced in rabbits immunized with a synthetic peptide corresponding a region of human SUV420H1.

Target

SUV420H1

Preservatives

Purified antibody supplied in 1x PBS buffer with 0.09% (w/v) sodium azide and 2% sucrose.

Form/Appearance

Liquid

Concentration

batch dependent

Storage

For short periods of storage (days) store at 4°C. For longer periods of storage, store SUV420H1 antibody at -20°C. As with any antibody avoid repeat freeze-thaw cycles.

Note

For research use only

Application notes

SUV420H1 antibody can be used for detection of SUV420H1 by ELISA at 1:1562500. SUV420H1 antibody can be used for detection of SUV420H1 by western blot at 1.25 µg/mL, and HRP conjugated secondary antibody should be diluted 1:50,000 - 100,000.

Clonality

Polyclonal

MW

52 kDa, 99 kDa

Uniprot ID
[Q4V775](#)
NCBI
[AAH98121](#)
Dilution Range

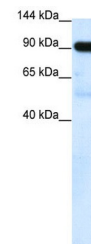
SUV420H1 antibody can be used for detection of SUV420H1 by ELISA at 1:1562500. SUV420H1 antibody can be used for detection of SUV420H1 by western blot at 1.25 µg/mL, and HRP conjugated secondary antibody should be diluted 1:50,000 - 100,000.

Expiration Date

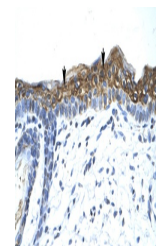
12 months from date of receipt.



Antibody used in WB on Human Jurkat 1.25...



Antibody used in WB on Human Placenta at...



Antibody used in IHC on Human Skin at 4....