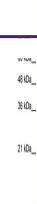
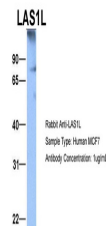

Product Datasheet

LAS1L Antibody (orb1243286)

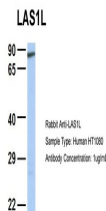
| Description | LAS1L Antibody |
|----------------------------|--|
| Species/Host | Rabbit |
| Reactivity | Human |
| Conjugation | Unconjugated |
| Tested Applications | ELISA, WB |
| Immunogen | Antibody produced in rabbits immunized with a synthetic peptide corresponding a region of human LAS1L. |
| Target | LAS1L |
| Preservatives | Purified antibody supplied in 1x PBS buffer with 0.09% (w/v) sodium azide and 2% sucrose. |
| Form/Appearance | Liquid |
| Concentration | batch dependent |
| Storage | For short periods of storage (days) store at 4°C. For longer periods of storage, store LAS1L antibody at -20°C. As with any antibody avoid repeat freeze-thaw cycles. |
| Note | For research use only |
| Application notes | LAS1L antibody can be used for detection of LAS1L by ELISA at 1:312500. LAS1L antibody can be used for detection of LAS1L by western blot at 1.25 µg/mL, and HRP conjugated secondary antibody should be diluted 1:50,000 - 100,000. |
| Clonality | Polyclonal |
| MW | 83 kDa |
| Uniprot ID | Q9Y4W2 |
| NCBI | NP_112483 |
| Dilution Range | LAS1L antibody can be used for detection of LAS1L by ELISA at 1:312500. LAS1L antibody can be used for detection of LAS1L by western blot at 1.25 µg/mL, and HRP conjugated secondary antibody should be diluted 1:50,000 - 100,000. |
| Expiration Date | 12 months from date of receipt. |



Antibody used in WB on Human HepG2 at 1....



Antibody used in WB on Human MCF7 at 1 u...



Antibody used in WB on Human HT1080 at 1...