
Product Datasheet

CREB3L2 Antibody (orb1243276)

Description

CREB3L2 Antibody

Species/Host

Rabbit

Reactivity

Human

Conjugation

Unconjugated

Tested

ELISA, IHC, WB

Applications
Immunogen

Antibody produced in rabbits immunized with a synthetic peptide corresponding a region of human CREB3L2.

Target

CREB3L2

Preservatives

Purified antibody supplied in 1x PBS buffer with 0.09% (w/v) sodium azide and 2% sucrose.

Form/Appearance

Liquid

Concentration

batch dependent

Storage

For short periods of storage (days) store at 4°C. For longer periods of storage, store CREB3L2 antibody at -20°C. As with any antibody avoid repeat freeze-thaw cycles.

Note

For research use only

Application notes

CREB3L2 antibody can be used for detection of CREB3L2 by ELISA at 1:12500. CREB3L2 antibody can be used for detection of CREB3L2 by western blot at 1.25 µg/mL, and HRP conjugated secondary antibody should be diluted 1:50,000 - 100,000.

Clonality

Polyclonal

MW

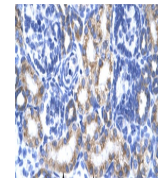
57 kDa

Uniprot ID
[Q70SY1](#)
NCBI
[NP_919047](#)
Dilution Range

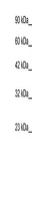
CREB3L2 antibody can be used for detection of CREB3L2 by ELISA at 1:12500. CREB3L2 antibody can be used for detection of CREB3L2 by western blot at 1.25 µg/mL, and HRP conjugated secondary antibody should be diluted 1:50,000 - 100,000.

Expiration Date

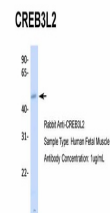
12 months from date of receipt.



Antibody used in IHC on Human kidney.



Antibody used in WB on Human Jurkat 1.25...



Antibody used in WB on Hum. Fetal Muscle...