
Product Datasheet

ZMYND11 Antibody (orb1243268)

Description

ZMYND11 Antibody

Species/Host

Rabbit

Reactivity

Canine, Human, Mouse, Rat

Conjugation

Unconjugated

Tested

ELISA, IHC, WB

Applications
Immunogen

Antibody produced in rabbits immunized with a synthetic peptide corresponding a region of human ZMYND11.

Target

ZMYND11

Preservatives

Purified antibody supplied in 1x PBS buffer with 0.09% (w/v) sodium azide and 2% sucrose.

Form/Appearance

Liquid

Concentration

batch dependent

Storage

For short periods of storage (days) store at 4°C. For longer periods of storage, store ZMYND11 antibody at -20°C. As with any antibody avoid repeat freeze-thaw cycles.

Note

For research use only

Application notes

ZMYND11 antibody can be used for detection of ZMYND11 by ELISA at 1:312500. ZMYND11 antibody can be used for detection of ZMYND11 by western blot at 1.25 µg/mL, and HRP conjugated secondary antibody should be diluted 1:50,000 - 100,000.

Clonality

Polyclonal

MW

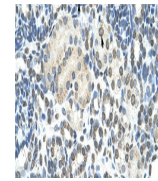
40 kDa, 66 kDa, 62 kDa

Uniprot ID
[Q6PJR5](#)
NCBI
[AAH12586](#)
Dilution Range

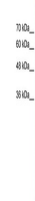
ZMYND11 antibody can be used for detection of ZMYND11 by ELISA at 1:312500. ZMYND11 antibody can be used for detection of ZMYND11 by western blot at 1.25 µg/mL, and HRP conjugated secondary antibody should be diluted 1:50,000 - 100,000.

Expiration Date

12 months from date of receipt.



Antibody used in IHC on Human kidney.



Antibody used in WB on Human HepG2 at 1....