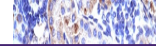

Product Datasheet

RIMS3 Antibody (orb1243258)

Description

RIMS3 Antibody


Species/Host

Rabbit

Reactivity

Canine, Human, Mouse, Rat, Zebrafish

Conjugation

Unconjugated

Tested

ELISA, IHC, WB

Applications

Antibody used in IHC on Human kidney.

Immunogen

Antibody produced in rabbits immunized with a synthetic peptide corresponding a region of human RIMS3.

Target

RIMS3

Preservatives

Purified antibody supplied in 1x PBS buffer with 0.09% (w/v) sodium azide and 2% sucrose.

Form/Appearance

Liquid

Concentration

batch dependent

Storage

For short periods of storage (days) store at 4°C. For longer periods of storage, store RIMS3 antibody at -20°C. As with any antibody avoid repeat freeze-thaw cycles.

Antibody used in WB on Human Jurkat cell...

Note

For research use only

Application notes

RIMS3 antibody can be used for detection of RIMS3 by ELISA at 1:312500. RIMS3 antibody can be used for detection of RIMS3 by western blot at 1.25 µg/mL, and HRP conjugated secondary antibody should be diluted 1:50,000 - 100,000.

Clonality

Polyclonal

MW

33 kDa

Uniprot ID
[Q9UJD0](#)
NCBI
[NP_055562](#)
Dilution Range

RIMS3 antibody can be used for detection of RIMS3 by ELISA at 1:312500. RIMS3 antibody can be used for detection of RIMS3 by western blot at 1.25 µg/mL, and HRP conjugated secondary antibody should be diluted 1:50,000 - 100,000.

Expiration Date

12 months from date of receipt.