

---

## Product Datasheet

### KCNN3 Antibody (orb1243196)

**Description**

KCNN3 Antibody

**Species/Host**

Rabbit

**Reactivity**

Canine, Human, Mouse, Rat

**Conjugation**

Unconjugated

**Tested Applications**

ELISA, WB

**Immunogen**

Antibody produced in rabbits immunized with a synthetic peptide corresponding a region of human KCNN3.

**Target**

KCNN3

**Preservatives**

Purified antibody supplied in 1x PBS buffer with 0.09% (w/v) sodium azide and 2% sucrose.

**Form/Appearance**

Liquid

**Concentration**

batch dependent

**Storage**

For short periods of storage (days) store at 4°C. For longer periods of storage, store KCNN3 antibody at -20°C. As with any antibody avoid repeat freeze-thaw cycles.

**Note**

For research use only

**Application notes**

KCNN3 antibody can be used for detection of KCNN3 by ELISA at 1:62500. KCNN3 antibody can be used for detection of KCNN3 by western blot at 2 µg/mL, and HRP conjugated secondary antibody should be diluted 1:50,000 - 100,000.

**Clonality**

Polyclonal

**MW**

81 kDa, 48 kDa

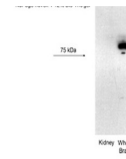
**Uniprot ID**
[Q9UGI6](#)
**NCBI**
[NP\\_002240](#)
**Dilution Range**

KCNN3 antibody can be used for detection of KCNN3 by ELISA at 1:62500. KCNN3 antibody can be used for detection of KCNN3 by western blot at 2 µg/mL, and HRP conjugated secondary antibody should be diluted 1:50,000 - 100,000.

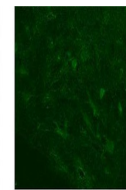
**Expiration Date**

12 months from date of receipt.

KCNN3 antibody



Antibody used in WB on Mouse kidney, bra...



See PIC 1 Data and Customer Feedback for more information

Antibody used in IHC on Rhesus macaque s...



Antibody used in WB on Human Daudi at 0....