

Product Datasheet

KCNQ2 Antibody (orb1243146)

Description

KCNQ2 Antibody

Species/Host

Rabbit

Reactivity

Canine, Human, Mouse, Rat

Conjugation

Unconjugated

Tested

ELISA, WB

Applications
Immunogen

Antibody produced in rabbits immunized with a synthetic peptide corresponding a region of human KCNQ2.

Target

KCNQ2

Preservatives

Purified antibody supplied in 1x PBS buffer with 0.09% (w/v) sodium azide and 2% sucrose.

Form/Appearance

Liquid

Concentration

batch dependent

Storage

For short periods of storage (days) store at 4°C. For longer periods of storage, store KCNQ2 antibody at -20°C. As with any antibody avoid repeat freeze-thaw cycles.

Note

For research use only

Application notes

KCNQ2 antibody can be used for detection of KCNQ2 by ELISA at 1:62500. KCNQ2 antibody can be used for detection of KCNQ2 by western blot at 0.5 µg/mL, and HRP conjugated secondary antibody should be diluted 1:50,000 - 100,000.

Clonality

Polyclonal

MW

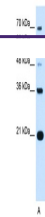
44 kDa, 93 kDa, 94 kDa, 96 kDa, 93 kDa

Uniprot ID
[Q53Y30](#)
NCBI
[NP_742107](#)
Dilution Range

KCNQ2 antibody can be used for detection of KCNQ2 by ELISA at 1:62500. KCNQ2 antibody can be used for detection of KCNQ2 by western blot at 0.5 µg/mL, and HRP conjugated secondary antibody should be diluted 1:50,000 - 100,000.

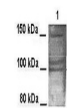
Expiration Date

12 months from date of receipt.

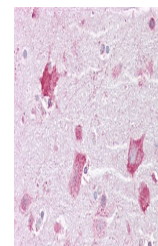


Antibody used in WB on Human Jurkat 0.2-...

KCNQ2


See Immunoblot Data and Customer Feedback for more information

Antibody used in WB on Hamster at 1:1000...



Antibody used in IHC on Human brain at 5...