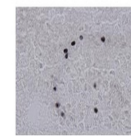

Product Datasheet

EGR1 Antibody (orb1242871)

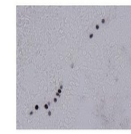
| Description | EGR1 Antibody | EGR1 |
|----------------------------|--|------|
| Species/Host | Rabbit | EGR1 |
| Reactivity | Mouse, Rat | EGR1 |
| Conjugation | Unconjugated | EGR1 |
| Tested Applications | ELISA, WB | EGR1 |
| Immunogen | Antibody produced in rabbits immunized with a synthetic peptide corresponding a region of mouse EGR1. | EGR1 |
| Target | EGR1 | EGR1 |
| Preservatives | Purified antibody supplied in 1x PBS buffer with 0.09% (w/v) sodium azide and 2% sucrose. | EGR1 |
| Form/Appearance | Liquid | EGR1 |
| Concentration | batch dependent | EGR1 |
| Storage | For short periods of storage (days) store at 4°C. For longer periods of storage, store EGR1 antibody at -20°C. As with any antibody avoid repeat freeze-thaw cycles. | EGR1 |
| Note | For research use only | EGR1 |
| Application notes | EGR1 antibody can be used for detection of EGR1 by ELISA at 1:12500. EGR1 antibody can be used for detection of EGR1 by western blot at 2.5 µg/mL, and HRP conjugated secondary antibody should be diluted 1:50,000 - 100,000. | EGR1 |
| Clonality | Polyclonal | EGR1 |
| MW | 59 kDa | EGR1 |
| Uniprot ID | P08046 | EGR1 |
| NCBI | NP_031939 | EGR1 |
| Dilution Range | EGR1 antibody can be used for detection of EGR1 by ELISA at 1:12500. EGR1 antibody can be used for detection of EGR1 by western blot at 2.5 µg/mL, and HRP conjugated secondary antibody should be diluted 1:50,000 - 100,000. | EGR1 |
| Expiration Date | 12 months from date of receipt. | EGR1 |

Antibody used in WB on Mouse NIH-3T3 at ...



See HC 1 Data and Customer Feedback for more information

Antibody used in IHC on Xenopus Laevis a...



See HC 2 Data and Customer Feedback for more information

Antibody used in IHC on Xenopus Laevis a...