
Product Datasheet

MYBBP1A Antibody (orb1242808)

Description

MYBBP1A Antibody

Species/Host

Rabbit

Reactivity

Mouse

Conjugation

Unconjugated

Tested

ELISA, IHC, WB

Applications
Immunogen

Antibody produced in rabbits immunized with a synthetic peptide corresponding a region of mouse MYBBP1A.

Target

MYBBP1A

Preservatives

Purified antibody supplied in 1x PBS buffer with 0.09% (w/v) sodium azide and 2% sucrose.

Form/Appearance

Liquid

Concentration

batch dependent

Storage

For short periods of storage (days) store at 4°C. For longer periods of storage, store MYBBP1A antibody at -20°C. As with any antibody avoid repeat freeze-thaw cycles.

Note

For research use only

Application notes

MYBBP1A antibody can be used for detection of MYBBP1A by ELISA at 1:312500. MYBBP1A antibody can be used for detection of MYBBP1A by western blot at 1.25 µg/mL, and HRP conjugated secondary antibody should be diluted 1:50,000 - 100,000.

Clonality

Polyclonal

MW

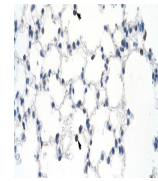
148 kDa

Uniprot ID
[Q7TPV4](#)
NCBI
[NP_058056](#)
Dilution Range

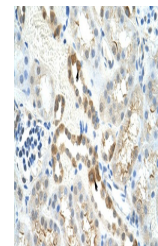
MYBBP1A antibody can be used for detection of MYBBP1A by ELISA at 1:312500. MYBBP1A antibody can be used for detection of MYBBP1A by western blot at 1.25 µg/mL, and HRP conjugated secondary antibody should be diluted 1:50,000 - 100,000.

Expiration Date

12 months from date of receipt.



Antibody used in IHC on Mouse Kidney.



Antibody used in IHC on Mouse Lung.



Antibody used in WB on Mouse SP2/0 at 1....