
Product Datasheet

TWIST1 Antibody (orb1242677)

Description

TWIST1 Antibody

Species/Host

Rabbit

Reactivity

Canine, Human, Mouse, Rat, Zebrafish

Conjugation

Unconjugated

Tested

ELISA, WB

Applications
Immunogen

Antibody produced in rabbits immunized with a synthetic peptide corresponding a region of human TWIST1.

Target

TWIST1

Preservatives

Purified antibody supplied in 1x PBS buffer with 0.09% (w/v) sodium azide and 2% sucrose.

Form/Appearance

Liquid

Concentration

batch dependent

Storage

For short periods of storage (days) store at 4°C. For longer periods of storage, store TWIST1 antibody at -20°C. As with any antibody avoid repeat freeze-thaw cycles.

Note

For research use only

Application notes

TWIST1 antibody can be used for detection of TWIST1 by ELISA at 1:1562500. TWIST1 antibody can be used for detection of TWIST1 by western blot at 2.5 µg/mL, and HRP conjugated secondary antibody should be diluted 1:50,000 - 100,000.

Clonality

Polyclonal

MW

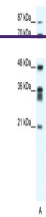
21 kDa

Uniprot ID
[Q15672](#)
NCBI
[NP_000465](#)
Dilution Range

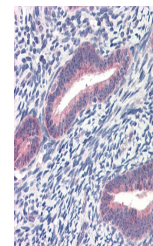
TWIST1 antibody can be used for detection of TWIST1 by ELISA at 1:1562500. TWIST1 antibody can be used for detection of TWIST1 by western blot at 2.5 µg/mL, and HRP conjugated secondary antibody should be diluted 1:50,000 - 100,000.

Expiration Date

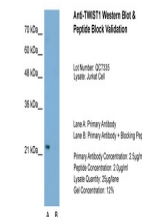
12 months from date of receipt.



Antibody used in WB on Human Jurkat 2.5 ...



Antibody used in IHC on Human Uterus.



Antibody used in WB on Jurkat 2.5 ug/ml ...