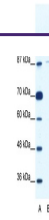

Product Datasheet

TAF1C Antibody (orb1242536)

| Description | TAF1C Antibody |
|----------------------------|--|
| Species/Host | Rabbit |
| Reactivity | Human |
| Conjugation | Unconjugated |
| Tested Applications | ELISA, WB |
| Immunogen | Antibody produced in rabbits immunized with a synthetic peptide corresponding a region of human TAF1C. |
| Target | TAF1C |
| Preservatives | Purified antibody supplied in 1x PBS buffer with 0.09% (w/v) sodium azide and 2% sucrose. |
| Form/Appearance | Liquid |
| Concentration | batch dependent |
| Storage | For short periods of storage (days) store at 4°C. For longer periods of storage, store TAF1C antibody at -20°C. As with any antibody avoid repeat freeze-thaw cycles. |
| Note | For research use only |
| Application notes | TAF1C antibody can be used for detection of TAF1C by ELISA at 1:12500. TAF1C antibody can be used for detection of TAF1C by western blot at 2.5 µg/mL, and HRP conjugated secondary antibody should be diluted 1:50,000 - 100,000. |
| Clonality | Polyclonal |
| MW | 85 kDa, 95 kDa |
| Uniprot ID | Q15572 |
| NCBI | NP_647610 |
| Dilution Range | TAF1C antibody can be used for detection of TAF1C by ELISA at 1:12500. TAF1C antibody can be used for detection of TAF1C by western blot at 2.5 µg/mL, and HRP conjugated secondary antibody should be diluted 1:50,000 - 100,000. |
| Expiration Date | 12 months from date of receipt. |



Antibody used in WB on Human Jurkat cell...