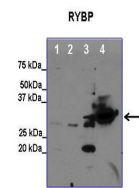

Product Datasheet

RYPB Antibody (orb1242467)

Description	RYPB Antibody
Species/Host	Rabbit
Reactivity	Human, Mouse
Conjugation	Unconjugated
Tested Applications	ELISA, WB
Immunogen	Antibody produced in rabbits immunized with a synthetic peptide corresponding a region of human RYPB.
Target	RYPB
Preservatives	Purified antibody supplied in 1x PBS buffer with 0.09% (w/v) sodium azide and 2% sucrose.
Form/Appearance	Liquid
Concentration	batch dependent
Storage	For short periods of storage (days) store at 4°C. For longer periods of storage, store RYPB antibody at -20°C. As with any antibody avoid repeat freeze-thaw cycles.
Note	For research use only
Application notes	RYPB antibody can be used for detection of RYPB by ELISA at 1:62500. RYPB antibody can be used for detection of RYPB by western blot at 1 µg/mL, and HRP conjugated secondary antibody should be diluted 1:50,000 - 100,000.
Clonality	Polyclonal
MW	25 kDa
Uniprot ID	Q8N488
NCBI	NP_036366
Dilution Range	RYPB antibody can be used for detection of RYPB by ELISA at 1:62500. RYPB antibody can be used for detection of RYPB by western blot at 1 µg/mL, and HRP conjugated secondary antibody should be diluted 1:50,000 - 100,000.
Expiration Date	12 months from date of receipt.



Antibody used in WB on Human Muscle at 0...



See Remunited 2 Data and Customer Feedback for more information

Antibody used in WB on Human, Mouse at 1...