
Product Datasheet

NR2F2 Antibody (orb1242393)

Description

NR2F2 Antibody

Species/Host

Rabbit

Reactivity

Canine, Human, Mouse, Rat

Conjugation

Unconjugated

Tested

ELISA, IHC, WB

Applications
Immunogen

Antibody produced in rabbits immunized with a synthetic peptide corresponding a region of human NR2F2.

Target

NR2F2

Preservatives

Purified antibody supplied in 1x PBS buffer with 0.09% (w/v) sodium azide and 2% sucrose.

Form/Appearance

Liquid

Concentration

batch dependent

Storage

For short periods of storage (days) store at 4°C. For longer periods of storage, store NR2F2 antibody at -20°C. As with any antibody avoid repeat freeze-thaw cycles.

Note

For research use only

Application notes

NR2F2 antibody can be used for detection of NR2F2 by ELISA at 1:312500. NR2F2 antibody can be used for detection of NR2F2 by western blot at 2.5 µg/mL, and HRP conjugated secondary antibody should be diluted 1:50,000 - 100,000.

Clonality

Polyclonal

MW

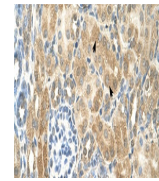
45 kDa

Uniprot ID
[P24468](#)
NCBI
[NP_066285](#)
Dilution Range

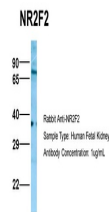
NR2F2 antibody can be used for detection of NR2F2 by ELISA at 1:312500. NR2F2 antibody can be used for detection of NR2F2 by western blot at 2.5 µg/mL, and HRP conjugated secondary antibody should be diluted 1:50,000 - 100,000.

Expiration Date

12 months from date of receipt.



Antibody used in IHC on Human kidney.



Antibody used in WB on Hum. Fetal Kidney...



Antibody used in WB on Human MCF7 cells ...