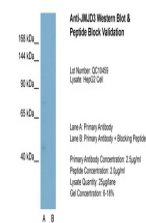

Product Datasheet

KDM6B Antibody (orb1242276)

| Description | KDM6B Antibody |
|----------------------------|---|
| Species/Host | Rabbit |
| Reactivity | Human, Mouse, Rat |
| Conjugation | Unconjugated |
| Tested Applications | ELISA, WB |
| Immunogen | Antibody produced in rabbits immunized with a synthetic peptide corresponding a region of human JMJD3. |
| Target | KDM6B |
| Preservatives | Purified antibody supplied in 1x PBS buffer with 0.09% (w/v) sodium azide and 2% sucrose. |
| Form/Appearance | Liquid |
| Concentration | batch dependent |
| Storage | For short periods of storage (days) store at 4°C. For longer periods of storage, store JMJD3 antibody at -20°C. As with any antibody avoid repeat freeze-thaw cycles. |
| Note | For research use only |
| Application notes | JMJD3 antibody can be used for detection of JMJD3 by ELISA at 1:1562500. JMJD3 antibody can be used for detection of JMJD3 by western blot at 1.25 µg/mL, and HRP conjugated secondary antibody should be diluted 1:50,000 - 100,000. |
| Clonality | Polyclonal |
| MW | 70 kDa |
| Uniprot ID | O15054 |
| NCBI | AAH09994 |
| Dilution Range | JMJD3 antibody can be used for detection of JMJD3 by ELISA at 1:1562500. JMJD3 antibody can be used for detection of JMJD3 by western blot at 1.25 µg/mL, and HRP conjugated secondary antibody should be diluted 1:50,000 - 100,000. |
| Expiration Date | 12 months from date of receipt. |

Antibody used in WB on Human HepG2 at 1....



Antibody used in WB on HepG2 at 2.5 µg/m...