
Product Datasheet

PRMT2 Antibody (orb1242257)

Description

PRMT2 Antibody

Species/Host

Rabbit

Reactivity

Human, Mouse, Rat

Conjugation

Unconjugated

Tested

ELISA, IHC, WB

Applications
Immunogen

Antibody produced in rabbits immunized with a synthetic peptide corresponding a region of human PRMT2.

Target

PRMT2

Preservatives

Purified antibody supplied in 1x PBS buffer with 0.09% (w/v) sodium azide and 2% sucrose.

Form/Appearance

Liquid

Concentration

batch dependent

Storage

For short periods of storage (days) store at 4°C. For longer periods of storage, store PRMT2 antibody at -20°C. As with any antibody avoid repeat freeze-thaw cycles.

Note

For research use only

Application notes

PRMT2 antibody can be used for detection of PRMT2 by ELISA at 1:1562500. PRMT2 antibody can be used for detection of PRMT2 by western blot at 0.625 µg/mL, and HRP conjugated secondary antibody should be diluted 1:50,000 - 100,000.

Clonality

Polyclonal

MW

48 kDa, 49 kDa

Uniprot ID
[P55345](#)
NCBI
[NP_001526](#)
Dilution Range

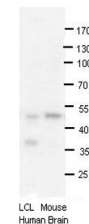
PRMT2 antibody can be used for detection of PRMT2 by ELISA at 1:1562500. PRMT2 antibody can be used for detection of PRMT2 by western blot at 0.625 µg/mL, and HRP conjugated secondary antibody should be diluted 1:50,000 - 100,000.

Expiration Date

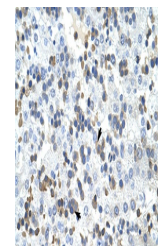
12 months from date of receipt.



Antibody used in WB on Human Jurkat 0.62...



Antibody used in WB on Human, Mouse at 1...



Antibody used in IHC on Human liver at 4...