

---

## Product Datasheet

### ANP32A Antibody (orb1242254)

**Description**

ANP32A Antibody

**Species/Host**

Rabbit

**Reactivity**

Human

**Conjugation**

Unconjugated

**Tested**

ELISA, IHC, WB

**Applications**
**Immunogen**

Antibody produced in rabbits immunized with a synthetic peptide corresponding a region of human ANP32A.

**Target**

ANP32A

**Preservatives**

Purified antibody supplied in 1x PBS buffer with 0.09% (w/v) sodium azide and 2% sucrose.

**Form/Appearance**

Liquid

**Concentration**

batch dependent

**Storage**

For short periods of storage (days) store at 4°C. For longer periods of storage, store ANP32A antibody at -20°C. As with any antibody avoid repeat freeze-thaw cycles.

**Note**

For research use only

**Application notes**

ANP32A antibody can be used for detection of ANP32A by ELISA at 1:312500. ANP32A antibody can be used for detection of ANP32A by western blot at 0.25 µg/mL, and HRP conjugated secondary antibody should be diluted 1:50,000 - 100,000.

**Clonality**

Polyclonal

**MW**

29 kDa

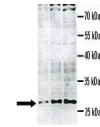
**Uniprot ID**
[P39687](#)
**NCBI**
[NP\\_006296](#)
**Dilution Range**

ANP32A antibody can be used for detection of ANP32A by ELISA at 1:312500. ANP32A antibody can be used for detection of ANP32A by western blot at 0.25 µg/mL, and HRP conjugated secondary antibody should be diluted 1:50,000 - 100,000.

**Expiration Date**

12 months from date of receipt.

ANP32A

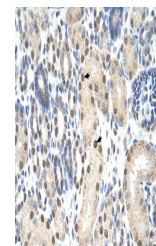


See Immunoblot 2.0 Data and Customer Feedback for more information

Antibody used in WB on Mouse cortex brai...



Antibody used in WB on Human Jurkat 0.2-...



Antibody used in IHC on human kidney at ...