
Product Datasheet

SF3B1 Antibody (orb1242230)

Description

SF3B1 Antibody

Species/Host

Rabbit

Reactivity

Canine, Human, Mouse, Rat

Conjugation

Unconjugated

Tested

ELISA, IHC, WB

Applications
Immunogen

Antibody produced in rabbits immunized with a synthetic peptide corresponding a region of human SF3B1.

Target

SF3B1

Preservatives

Purified antibody supplied in 1x PBS buffer with 0.09% (w/v) sodium azide and 2% sucrose.

Form/Appearance

Liquid

Concentration

batch dependent

Storage

For short periods of storage (days) store at 4°C. For longer periods of storage, store SF3B1 antibody at -20°C. As with any antibody avoid repeat freeze-thaw cycles.

Note

For research use only

Application notes

SF3B1 antibody can be used for detection of SF3B1 by ELISA at 1:62500. SF3B1 antibody can be used for detection of SF3B1 by western blot at 1.25 µg/mL, and HRP conjugated secondary antibody should be diluted 1:50,000 - 100,000.

Clonality

Polyclonal

MW

143 kDa, 16 kDa

Uniprot ID
[O75533](#)
NCBI
[NP_036565](#)
Dilution Range

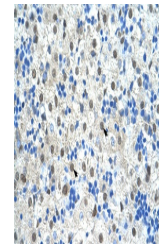
SF3B1 antibody can be used for detection of SF3B1 by ELISA at 1:62500. SF3B1 antibody can be used for detection of SF3B1 by western blot at 1.25 µg/mL, and HRP conjugated secondary antibody should be diluted 1:50,000 - 100,000.

Expiration Date

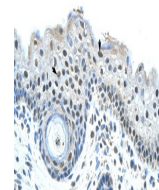
12 months from date of receipt.



Antibody used in WB on Human Thymus at 1...



Antibody used in IHC on Human Liver at 4...



Antibody used in IHC on Human Skin at 16...