
Product Datasheet

RBPMS Antibody (orb1242224)

Description

RBPMS Antibody

Species/Host

Rabbit

Reactivity

Canine, Human, Mouse, Rat

Conjugation

Unconjugated

Tested

ELISA, IHC, WB

Applications
Immunogen

Antibody produced in rabbits immunized with a synthetic peptide corresponding a region of human RBPMS.

Target

RBPMS

Preservatives

Purified antibody supplied in 1x PBS buffer with 0.09% (w/v) sodium azide and 2% sucrose.

Form/Appearance

Liquid

Concentration

batch dependent

Storage

For short periods of storage (days) store at 4°C. For longer periods of storage, store RBPMS antibody at -20°C. As with any antibody avoid repeat freeze-thaw cycles.

Note

For research use only

Application notes

RBPMS antibody can be used for detection of RBPMS by ELISA at 1:62500. RBPMS antibody can be used for detection of RBPMS by western blot at 1.25 µg/mL, and HRP conjugated secondary antibody should be diluted 1:50,000 - 100,000.

Clonality

Polyclonal

MW

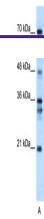
24 kDa

Uniprot ID
[Q569H2](#)
NCBI
[NP_001008712](#)
Dilution Range

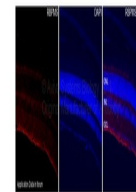
RBPMS antibody can be used for detection of RBPMS by ELISA at 1:62500. RBPMS antibody can be used for detection of RBPMS by western blot at 1.25 µg/mL, and HRP conjugated secondary antibody should be diluted 1:50,000 - 100,000.

Expiration Date

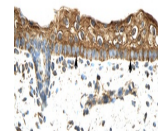
12 months from date of receipt.



Antibody used in WB on Human Liver at 0...



Antibody used in IHC on Mouse Retina at ...



Antibody used in IHC on Human Skin at 4...