

---

## Product Datasheet

### RAE1 Antibody (orb1242210)

**Description**

RAE1 Antibody

**Species/Host**

Rabbit

**Reactivity**

Canine, Human, Mouse, Rat

**Conjugation**

Unconjugated

**Tested**

ELISA, IHC, WB

**Applications**
**Immunogen**

Antibody produced in rabbits immunized with a synthetic peptide corresponding a region of human RAE1.

**Target**

RAE1

**Preservatives**

Purified antibody supplied in 1x PBS buffer with 0.09% (w/v) sodium azide and 2% sucrose.

**Form/Appearance**

Liquid

**Concentration**

batch dependent

**Storage**

For short periods of storage (days) store at 4°C. For longer periods of storage, store RAE1 antibody at -20°C. As with any antibody avoid repeat freeze-thaw cycles.

**Note**

For research use only

**Application notes**

RAE1 antibody can be used for detection of RAE1 by ELISA at 1:312500. RAE1 antibody can be used for detection of RAE1 by western blot at 0.25 µg/mL, and HRP conjugated secondary antibody should be diluted 1:50,000 - 100,000.

**Clonality**

Polyclonal

**MW**

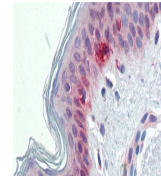
40 kDa, 41 kDa

**Uniprot ID**
[P78406](#)
**NCBI**
[NP\\_001015885](#)
**Dilution Range**

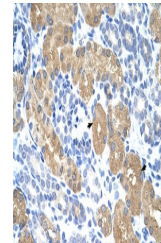
RAE1 antibody can be used for detection of RAE1 by ELISA at 1:312500. RAE1 antibody can be used for detection of RAE1 by western blot at 0.25 µg/mL, and HRP conjugated secondary antibody should be diluted 1:50,000 - 100,000.

**Expiration Date**

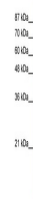
12 months from date of receipt.



Antibody used in IHC on Human Skin at 5...



Antibody used in IHC on Human Kidney at ...



Antibody used in WB on Human Jurkat cell...