

---

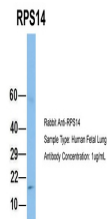
## Product Datasheet

### RPS14 Antibody (orb1242204)

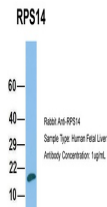
<b>Description</b>	RPS14 Antibody
<b>Species/Host</b>	Rabbit
<b>Reactivity</b>	Canine, Drosophila, Human, Mouse, Rat, Zebrafish
<b>Conjugation</b>	Unconjugated
<b>Tested Applications</b>	ELISA, WB
<b>Immunogen</b>	Antibody produced in rabbits immunized with a synthetic peptide corresponding a region of human RPS14.
<b>Target</b>	RPS14
<b>Preservatives</b>	Purified antibody supplied in 1x PBS buffer with 0.09% (w/v) sodium azide and 2% sucrose.
<b>Form/Appearance</b>	Liquid
<b>Concentration</b>	batch dependent
<b>Storage</b>	For short periods of storage (days) store at 4°C. For longer periods of storage, store RPS14 antibody at -20°C. As with any antibody avoid repeat freeze-thaw cycles.
<b>Note</b>	For research use only
<b>Application notes</b>	RPS14 antibody can be used for detection of RPS14 by ELISA at 1:12500. RPS14 antibody can be used for detection of RPS14 by western blot at 2.5 µg/mL, and HRP conjugated secondary antibody should be diluted 1:50,000 - 100,000.
<b>Clonality</b>	Polyclonal
<b>MW</b>	17 kDa, 16 kDa, 16 kDa
<b>Uniprot ID</b>	<a href="#">P62263</a>
<b>NCBI</b>	<a href="#">NP_001020242</a>
<b>Dilution Range</b>	RPS14 antibody can be used for detection of RPS14 by ELISA at 1:12500. RPS14 antibody can be used for detection of RPS14 by western blot at 2.5 µg/mL, and HRP conjugated secondary antibody should be diluted 1:50,000 - 100,000.
<b>Expiration Date</b>	12 months from date of receipt.



Antibody used in WB on Human HepG2 at 2....



Antibody used in WB on Hum. Fetal Lung a...



Antibody used in WB on Hum. Fetal Liver ...