
Product Datasheet

ADARB1 Antibody (orb1242198)

Description

ADARB1 Antibody

Species/Host

Rabbit

Reactivity

Human, Mouse, Rat

Conjugation

Unconjugated

Tested Applications

ELISA, WB

Immunogen

Antibody produced in rabbits immunized with a synthetic peptide corresponding a region of human ADARB1.

Target

ADARB1

Preservatives

Purified antibody supplied in 1x PBS buffer with 0.09% (w/v) sodium azide and 2% sucrose.

Form/Appearance

Liquid

Concentration

batch dependent

Storage

For short periods of storage (days) store at 4°C. For longer periods of storage, store ADARB1 antibody at -20°C. As with any antibody avoid repeat freeze-thaw cycles.

Note

For research use only

Application notes

ADARB1 antibody can be used for detection of ADARB1 by ELISA at 1:1562500. ADARB1 antibody can be used for detection of ADARB1 by western blot at 1.25 µg/mL, and HRP conjugated secondary antibody should be diluted 1:50,000 - 100,000.

Clonality

Polyclonal

MW

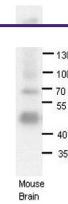
77 kDa, 80 kDa, 81 kDa, 78 kDa

Uniprot ID
[Q4AE79](#)
NCBI
[NP_001103](#)
Dilution Range

ADARB1 antibody can be used for detection of ADARB1 by ELISA at 1:1562500. ADARB1 antibody can be used for detection of ADARB1 by western blot at 1.25 µg/mL, and HRP conjugated secondary antibody should be diluted 1:50,000 - 100,000.

Expiration Date

12 months from date of receipt.



Antibody used in WB on Mouse brains at 1...



Antibody used in WB on Human HepG2 at 1....