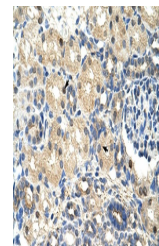


---

## Product Datasheet

### SRP14 Antibody (orb1242159)

Description	SRP14 Antibody	
<b>Species/Host</b>	Rabbit	
<b>Reactivity</b>	Canine, Human	
<b>Conjugation</b>	Unconjugated	
<b>Tested Applications</b>	ELISA, IHC, WB	Antibody used in WB on Human HepG2 at 1....
<b>Immunogen</b>	Antibody produced in rabbits immunized with a synthetic peptide corresponding a region of human SRP14.	
<b>Target</b>	SRP14	
<b>Preservatives</b>	Purified antibody supplied in 1x PBS buffer with 0.09% (w/v) sodium azide and 2% sucrose.	
<b>Form/Appearance</b>	Liquid	
<b>Concentration</b>	batch dependent	
<b>Storage</b>	For short periods of storage (days) store at 4°C. For longer periods of storage, store SRP14 antibody at -20°C. As with any antibody avoid repeat freeze-thaw cycles.	
<b>Note</b>	For research use only	
<b>Application notes</b>	SRP14 antibody can be used for detection of SRP14 by ELISA at 1:62500. SRP14 antibody can be used for detection of SRP14 by western blot at 1.25 µg/mL, and HRP conjugated secondary antibody should be diluted 1:50,000 - 100,000.	
<b>Clonality</b>	Polyclonal	
<b>MW</b>	15 kDa	
<b>Uniprot ID</b>	<a href="#">P37108</a>	
<b>NCBI</b>	<a href="#">NP_003125</a>	
<b>Dilution Range</b>	SRP14 antibody can be used for detection of SRP14 by ELISA at 1:62500. SRP14 antibody can be used for detection of SRP14 by western blot at 1.25 µg/mL, and HRP conjugated secondary antibody should be diluted 1:50,000 - 100,000.	
<b>Expiration Date</b>	12 months from date of receipt.	



Antibody used in IHC on Human kidney at ...