

---

## Product Datasheet

### SRP19 Antibody (orb1242158)

**Description**

SRP19 Antibody

**Species/Host**

Rabbit

**Reactivity**

Human

**Conjugation**

Unconjugated

**Tested**

ELISA, IHC, WB

**Applications**
**Immunogen**

Antibody produced in rabbits immunized with a synthetic peptide corresponding a region of human SRP19.

**Target**

SRP19

**Preservatives**

Purified antibody supplied in 1x PBS buffer with 0.09% (w/v) sodium azide and 2% sucrose.

**Form/Appearance**

Liquid

**Concentration**

batch dependent

**Storage**

For short periods of storage (days) store at 4°C. For longer periods of storage, store SRP19 antibody at -20°C. As with any antibody avoid repeat freeze-thaw cycles.

**Note**

For research use only

**Application notes**

SRP19 antibody can be used for detection of SRP19 by ELISA at 1:1562500. SRP19 antibody can be used for detection of SRP19 by western blot at 1.25 µg/mL, and HRP conjugated secondary antibody should be diluted 1:50,000 - 100,000.

**Clonality**

Polyclonal

**MW**

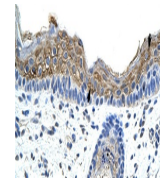
16 kDa

**Uniprot ID**
[P09132](#)
**NCBI**
[NP\\_003126](#)
**Dilution Range**

SRP19 antibody can be used for detection of SRP19 by ELISA at 1:1562500. SRP19 antibody can be used for detection of SRP19 by western blot at 1.25 µg/mL, and HRP conjugated secondary antibody should be diluted 1:50,000 - 100,000.

**Expiration Date**

12 months from date of receipt.



Antibody used in IHC on Human Skin at 4....



Antibody used in WB on Human Jurkat cell...