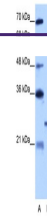
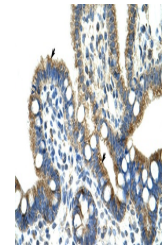

Product Datasheet

CPNE1 Antibody (orb1242139)

Description	CPNE1 Antibody
Species/Host	Rabbit
Reactivity	Human
Conjugation	Unconjugated
Tested Applications	ELISA, IHC, WB
Immunogen	Antibody produced in rabbits immunized with a synthetic peptide corresponding a region of human CPNE1.
Target	CPNE1
Preservatives	Purified antibody supplied in 1x PBS buffer with 0.09% (w/v) sodium azide and 2% sucrose.
Form/Appearance	Liquid
Concentration	batch dependent
Storage	For short periods of storage (days) store at 4°C. For longer periods of storage, store CPNE1 antibody at -20°C. As with any antibody avoid repeat freeze-thaw cycles.
Note	For research use only
Application notes	CPNE1 antibody can be used for detection of CPNE1 by ELISA at 1:312500. CPNE1 antibody can be used for detection of CPNE1 by western blot at 5.0 µg/mL, and HRP conjugated secondary antibody should be diluted 1:50,000 - 100,000.
Clonality	Polyclonal
MW	59 kDa, 59 kDa, 59 kDa, 59 kDa, 59 kDa, 59 kDa, 59 kDa, 59 kDa
Uniprot ID	Q99829
NCBI	NP_003906
Dilution Range	CPNE1 antibody can be used for detection of CPNE1 by ELISA at 1:312500. CPNE1 antibody can be used for detection of CPNE1 by western blot at 5.0 µg/mL, and HRP conjugated secondary antibody should be diluted 1:50,000 - 100,000.
Expiration Date	12 months from date of receipt.



Antibody used in WB on Human HepG2 at 5....



Antibody used in IHC on Human Intestine ...