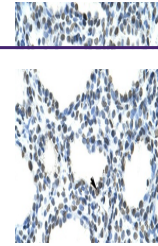
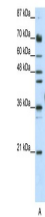

Product Datasheet

TRA2B Antibody (orb1242133)

Description	TRA2B Antibody
Species/Host	Rabbit
Reactivity	Canine, Human, Mouse, Rat
Conjugation	Unconjugated
Tested Applications	ELISA, IHC, WB
Immunogen	Antibody produced in rabbits immunized with a synthetic peptide corresponding a region of human SFRS10.
Target	TRA2B
Preservatives	Purified antibody supplied in 1x PBS buffer with 0.09% (w/v) sodium azide and 2% sucrose.
Form/Appearance	Liquid
Concentration	batch dependent
Storage	For short periods of storage (days) store at 4°C. For longer periods of storage, store SFRS10 antibody at -20°C. As with any antibody avoid repeat freeze-thaw cycles.
Note	For research use only
Application notes	SFRS10 antibody can be used for detection of SFRS10 by ELISA at 1:62500. SFRS10 antibody can be used for detection of SFRS10 by western blot at 1.25 µg/mL, and HRP conjugated secondary antibody should be diluted 1:50,000 - 100,000.
Clonality	Polyclonal
MW	32 kDa
Uniprot ID	P62995
NCBI	NP_004584
Dilution Range	SFRS10 antibody can be used for detection of SFRS10 by ELISA at 1:62500. SFRS10 antibody can be used for detection of SFRS10 by western blot at 1.25 µg/mL, and HRP conjugated secondary antibody should be diluted 1:50,000 - 100,000.
Expiration Date	12 months from date of receipt.



Antibody used in IHC on Human Lung at 4...



Antibody used in WB on Human Jurkat cell...