
Product Datasheet

PRPF3 Antibody (orb1242126)

Description

PRPF3 Antibody

Species/Host

Rabbit

Reactivity

Canine, Human, Mouse, Rat

Conjugation

Unconjugated

Tested

ELISA, WB

Applications
Immunogen

Antibody produced in rabbits immunized with a synthetic peptide corresponding a region of human PRPF3.

Target

PRPF3

Preservatives

Purified antibody supplied in 1x PBS buffer with 0.09% (w/v) sodium azide and 2% sucrose.

Form/Appearance

Liquid

Concentration

batch dependent

Storage

For short periods of storage (days) store at 4°C. For longer periods of storage, store PRPF3 antibody at -20°C. As with any antibody avoid repeat freeze-thaw cycles.

Note

For research use only

Application notes

PRPF3 antibody can be used for detection of PRPF3 by ELISA at 1:62500. PRPF3 antibody can be used for detection of PRPF3 by western blot at 0.5 µg/mL, and HRP conjugated secondary antibody should be diluted 1:50,000 - 100,000.

Clonality

Polyclonal

MW

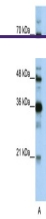
75 kDa

Uniprot ID
[O43395](#)
NCBI
[NP_004689](#)
Dilution Range

PRPF3 antibody can be used for detection of PRPF3 by ELISA at 1:62500. PRPF3 antibody can be used for detection of PRPF3 by western blot at 0.5 µg/mL, and HRP conjugated secondary antibody should be diluted 1:50,000 - 100,000.

Expiration Date

12 months from date of receipt.



Antibody used in WB on Human HepG2 at 0....