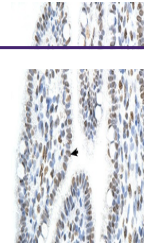


---

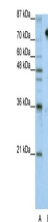
## Product Datasheet

### SFPQ Antibody (orb1242118)

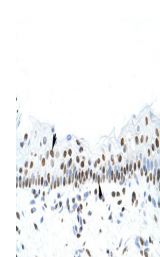
<b>Description</b>	SFPQ Antibody
<b>Species/Host</b>	Rabbit
<b>Reactivity</b>	Human
<b>Conjugation</b>	Unconjugated
<b>Tested Applications</b>	ELISA, IHC, WB
<b>Immunogen</b>	Antibody produced in rabbits immunized with a synthetic peptide corresponding a region of human SFPQ.
<b>Target</b>	SFPQ
<b>Preservatives</b>	Purified antibody supplied in 1x PBS buffer with 0.09% (w/v) sodium azide and 2% sucrose.
<b>Form/Appearance</b>	Liquid
<b>Concentration</b>	batch dependent
<b>Storage</b>	For short periods of storage (days) store at 4°C. For longer periods of storage, store SFPQ antibody at -20°C. As with any antibody avoid repeat freeze-thaw cycles.
<b>Note</b>	For research use only
<b>Application notes</b>	SFPQ antibody can be used for detection of SFPQ by ELISA at 1:12500. SFPQ antibody can be used for detection of SFPQ by western blot at 1.25 µg/mL, and HRP conjugated secondary antibody should be diluted 1:50,000 - 100,000.
<b>Clonality</b>	Polyclonal
<b>MW</b>	78 kDa
<b>Uniprot ID</b>	<a href="#">P23246</a>
<b>NCBI</b>	<a href="#">NP_005057</a>
<b>Dilution Range</b>	SFPQ antibody can be used for detection of SFPQ by ELISA at 1:12500. SFPQ antibody can be used for detection of SFPQ by western blot at 1.25 µg/mL, and HRP conjugated secondary antibody should be diluted 1:50,000 - 100,000.
<b>Expiration Date</b>	12 months from date of receipt.



Antibody used in IHC on Human Intestine ...



Antibody used in WB on Human HepG2 at 1....



Antibody used in IHC on Human Skin at 4....