
Product Datasheet

SF3A1 Antibody (orb1242104)

Description

SF3A1 Antibody

Species/Host

Rabbit

Reactivity

Human, Mouse, Rat

Conjugation

Unconjugated

Tested

ELISA, WB

Applications
Immunogen

Antibody produced in rabbits immunized with a synthetic peptide corresponding a region of human SF3A1.

Target

SF3A1

Preservatives

Purified antibody supplied in 1x PBS buffer with 0.09% (w/v) sodium azide and 2% sucrose.

Form/Appearance

Liquid

Concentration

batch dependent

Storage

For short periods of storage (days) store at 4°C. For longer periods of storage, store SF3A1 antibody at -20°C. As with any antibody avoid repeat freeze-thaw cycles.

Note

For research use only

Application notes

SF3A1 antibody can be used for detection of SF3A1 by ELISA at 1:62500. SF3A1 antibody can be used for detection of SF3A1 by western blot at 0.25 µg/mL, and HRP conjugated secondary antibody should be diluted 1:50,000 - 100,000.

Clonality

Polyclonal

MW

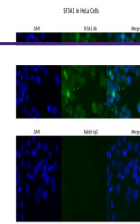
89 kDa

Uniprot ID
[Q15459](#)
NCBI
[NP_005868](#)
Dilution Range

SF3A1 antibody can be used for detection of SF3A1 by ELISA at 1:62500. SF3A1 antibody can be used for detection of SF3A1 by western blot at 0.25 µg/mL, and HRP conjugated secondary antibody should be diluted 1:50,000 - 100,000.

Expiration Date

12 months from date of receipt.



Antibody used in IF on HeLa at 4 ug/ml.



Antibody used in WB on Human 721_B cells...