

Product Datasheet

RNASEH2A Antibody (orb1242087)

Description

RNASEH2A Antibody

Species/Host

Rabbit

Reactivity

Human

Conjugation

Unconjugated

Tested

ELISA, IHC, WB

Applications
Immunogen

Antibody produced in rabbits immunized with a synthetic peptide corresponding a region of human RNASEH2A.

Target

RNASEH2A

Preservatives

Purified antibody supplied in 1x PBS buffer with 0.09% (w/v) sodium azide and 2% sucrose.

Form/Appearance

Liquid

Concentration

batch dependent

Storage

For short periods of storage (days) store at 4°C. For longer periods of storage, store RNASEH2A antibody at -20°C. As with any antibody avoid repeat freeze-thaw cycles.

Note

For research use only

Application notes

RNASEH2A antibody can be used for detection of RNASEH2A by ELISA at 1:312500. RNASEH2A antibody can be used for detection of RNASEH2A by western blot at 0.25 µg/mL, and HRP conjugated secondary antibody should be diluted 1:50,000 - 100,000.

Clonality

Polyclonal

MW

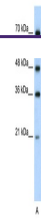
33 kDa

Uniprot ID
[O75792](#)
NCBI
[NP_006388](#)
Dilution Range

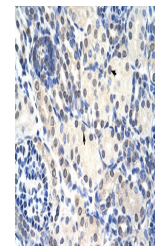
RNASEH2A antibody can be used for detection of RNASEH2A by ELISA at 1:312500. RNASEH2A antibody can be used for detection of RNASEH2A by western blot at 0.25 µg/mL, and HRP conjugated secondary antibody should be diluted 1:50,000 - 100,000.

Expiration Date

12 months from date of receipt.



Antibody used in WB on Human Jurkat 0.2-...



Antibody used in IHC on Human Kidney at ...