
Product Datasheet

CPSF6 Antibody (orb1242065)

Description

CPSF6 Antibody

Species/Host

Rabbit

Reactivity

Canine, Human, Mouse, Rat

Conjugation

Unconjugated

Tested Applications

ELISA, IHC, WB

Immunogen

Antibody produced in rabbits immunized with a synthetic peptide corresponding a region of human CPSF6.

Target

CPSF6

Preservatives

Purified antibody supplied in 1x PBS buffer with 0.09% (w/v) sodium azide and 2% sucrose.

Form/Appearance

Liquid

Concentration

batch dependent

Storage

For short periods of storage (days) store at 4°C. For longer periods of storage, store CPSF6 antibody at -20°C. As with any antibody avoid repeat freeze-thaw cycles.

Note

For research use only

Application notes

CPSF6 antibody can be used for detection of CPSF6 by ELISA at 1:1562500. CPSF6 antibody can be used for detection of CPSF6 by western blot at 0.3125 µg/mL, and HRP conjugated secondary antibody should be diluted 1:50,000 - 100,000.

Clonality

Polyclonal

MW

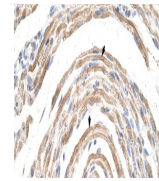
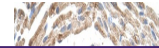
61 kDa

Uniprot ID
[Q16630](#)
NCBI
[NP_008938](#)
Dilution Range

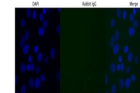
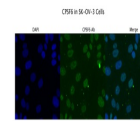
CPSF6 antibody can be used for detection of CPSF6 by ELISA at 1:1562500. CPSF6 antibody can be used for detection of CPSF6 by western blot at 0.3125 µg/mL, and HRP conjugated secondary antibody should be diluted 1:50,000 - 100,000.

Expiration Date

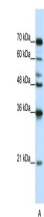
12 months from date of receipt.



Antibody used in IHC on Human Muscle at ...



Antibody used in IF on SKOV3 at 4 ug/ml.



Antibody used in WB on Human Jurkat cell...