

---

## Product Datasheet

### HNRNPUL1 Antibody (orb1242063)

**Description**

HNRNPUL1 Antibody

**Species/Host**

Rabbit

**Reactivity**

Canine, Human

**Conjugation**

Unconjugated

**Tested**

ELISA, IHC, WB

**Applications**
**Immunogen**

Antibody produced in rabbits immunized with a synthetic peptide corresponding a region of human HNRNPUL1.

**Target**

HNRNPUL1

**Preservatives**

Purified antibody supplied in 1x PBS buffer with 0.09% (w/v) sodium azide and 2% sucrose.

**Form/Appearance**

Liquid

**Concentration**

batch dependent

**Storage**

For short periods of storage (days) store at 4°C. For longer periods of storage, store HNRNPUL1 antibody at -20°C. As with any antibody avoid repeat freeze-thaw cycles.

**Note**

For research use only

**Application notes**

HNRNPUL1 antibody can be used for detection of HNRNPUL1 by ELISA at 1:312500. HNRNPUL1 antibody can be used for detection of HNRNPUL1 by western blot at 0.25 µg/mL, and HRP conjugated secondary antibody should be diluted 1:50,000 - 100,000.

**Clonality**

Polyclonal

**MW**

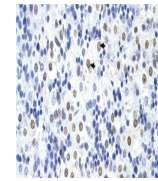
83 kDa, 96 kDa

**Uniprot ID**
[Q9BUJ2](#)
**NCBI**
[NP\\_653333](#)
**Dilution Range**

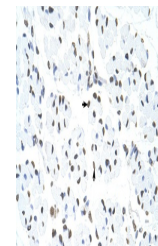
HNRNPUL1 antibody can be used for detection of HNRNPUL1 by ELISA at 1:312500. HNRNPUL1 antibody can be used for detection of HNRNPUL1 by western blot at 0.25 µg/mL, and HRP conjugated secondary antibody should be diluted 1:50,000 - 100,000.

**Expiration Date**

12 months from date of receipt.



Antibody used in IHC on Human Liver at 4...



Antibody used in IHC on Human Muscle at ...



Antibody used in WB on Human Raji at 0.2...