
Product Datasheet

HNRNPH3 Antibody (orb1242057)

Description

HNRNPH3 Antibody

Species/Host

Rabbit

Reactivity

Canine, Human, Mouse, Rat

Conjugation

Unconjugated

Tested

ELISA, IHC, WB

Applications
Immunogen

Antibody produced in rabbits immunized with a synthetic peptide corresponding a region of human HNRNPH3.

Target

HNRNPH3

Preservatives

Purified antibody supplied in 1x PBS buffer with 0.09% (w/v) sodium azide and 2% sucrose.

Form/Appearance

Liquid

Concentration

batch dependent

Storage

For short periods of storage (days) store at 4°C. For longer periods of storage, store HNRNPH3 antibody at -20°C. As with any antibody avoid repeat freeze-thaw cycles.

Note

For research use only

Application notes

HNRNPH3 antibody can be used for detection of HNRNPH3 by ELISA at 1:62500. HNRNPH3 antibody can be used for detection of HNRNPH3 by western blot at 1.0 µg/mL, and HRP conjugated secondary antibody should be diluted 1:50,000 - 100,000.

Clonality

Polyclonal

MW

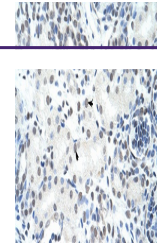
38 kDa, 35 kDa

Uniprot ID
[P31942](#)
NCBI
[NP_036339](#)
Dilution Range

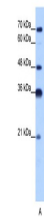
HNRNPH3 antibody can be used for detection of HNRNPH3 by ELISA at 1:62500. HNRNPH3 antibody can be used for detection of HNRNPH3 by western blot at 1.0 µg/mL, and HRP conjugated secondary antibody should be diluted 1:50,000 - 100,000.

Expiration Date

12 months from date of receipt.



Antibody used in IHC on Human Kidney at ...



Antibody used in WB on Human Raji cells ...