
Product Datasheet

PUF60 Antibody (orb1242047)

Description

PUF60 Antibody

Species/Host

Rabbit

Reactivity

Human, Mouse, Rat

Conjugation

Unconjugated

Tested Applications

ELISA, WB

Immunogen

Antibody produced in rabbits immunized with a synthetic peptide corresponding a region of human PUF60.

Target

PUF60

Preservatives

Purified antibody supplied in 1x PBS buffer with 0.09% (w/v) sodium azide and 2% sucrose.

Form/Appearance

Liquid

Concentration

batch dependent

Storage

For short periods of storage (days) store at 4°C. For longer periods of storage, store PUF60 antibody at -20°C. As with any antibody avoid repeat freeze-thaw cycles.

Note

For research use only

Application notes

PUF60 antibody can be used for detection of PUF60 by ELISA at 1:312500. PUF60 antibody can be used for detection of PUF60 by western blot at 0.5 µg/mL, and HRP conjugated secondary antibody should be diluted 1:50,000 - 100,000.

Clonality

Polyclonal

MW

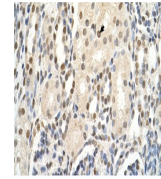
58 kDa

Uniprot ID
[Q9UHX1](#)
NCBI
[NP_055096](#)
Dilution Range

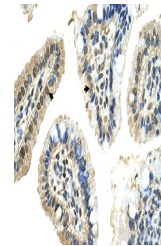
PUF60 antibody can be used for detection of PUF60 by ELISA at 1:312500. PUF60 antibody can be used for detection of PUF60 by western blot at 0.5 µg/mL, and HRP conjugated secondary antibody should be diluted 1:50,000 - 100,000.

Expiration Date

12 months from date of receipt.



Antibody used in WB on Human HeLa at 0.2...



Antibody used in IHC on Human Intestine ...