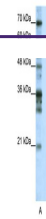


---

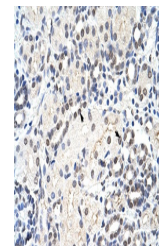
## Product Datasheet

### MRM1 Antibody (orb1241994)

<b>Description</b>	MRM1 Antibody
<b>Species/Host</b>	Rabbit
<b>Reactivity</b>	Human
<b>Conjugation</b>	Unconjugated
<b>Tested Applications</b>	ELISA, IHC, WB
<b>Immunogen</b>	Antibody produced in rabbits immunized with a synthetic peptide corresponding a region of human MRM1.
<b>Target</b>	MRM1
<b>Preservatives</b>	Purified antibody supplied in 1x PBS buffer with 0.09% (w/v) sodium azide and 2% sucrose.
<b>Form/Appearance</b>	Liquid
<b>Concentration</b>	batch dependent
<b>Storage</b>	For short periods of storage (days) store at 4°C. For longer periods of storage, store MRM1 antibody at -20°C. As with any antibody avoid repeat freeze-thaw cycles.
<b>Note</b>	For research use only
<b>Application notes</b>	MRM1 antibody can be used for detection of MRM1 by ELISA at 1:312500. MRM1 antibody can be used for detection of MRM1 by western blot at 1.25 µg/mL, and HRP conjugated secondary antibody should be diluted 1:50,000 - 100,000.
<b>Clonality</b>	Polyclonal
<b>MW</b>	18 kDa, 39 kDa
<b>Uniprot ID</b>	<a href="#">Q6IN84</a>
<b>NCBI</b>	<a href="#">AAH09416</a>
<b>Dilution Range</b>	MRM1 antibody can be used for detection of MRM1 by ELISA at 1:312500. MRM1 antibody can be used for detection of MRM1 by western blot at 1.25 µg/mL, and HRP conjugated secondary antibody should be diluted 1:50,000 - 100,000.
<b>Expiration Date</b>	12 months from date of receipt.



Antibody used in WB on Human HepG2 at 1....



Antibody used in IHC on Human Kidney at ...