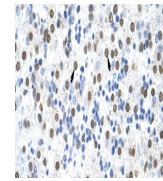
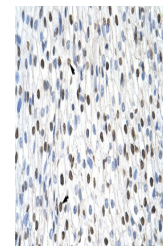

Product Datasheet

MSI2 Antibody (orb1241968)

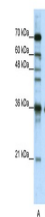
Description	MSI2 Antibody
Species/Host	Rabbit
Reactivity	C. elegans, Human, Mouse, Rat, Zebrafish
Conjugation	Unconjugated
Tested Applications	ELISA, IHC, WB
Immunogen	Antibody produced in rabbits immunized with a synthetic peptide corresponding a region of human MSI2.
Target	MSI2
Preservatives	Purified antibody supplied in 1x PBS buffer with 0.09% (w/v) sodium azide and 2% sucrose.
Form/Appearance	Liquid
Concentration	batch dependent
Storage	For short periods of storage (days) store at 4°C. For longer periods of storage, store MSI2 antibody at -20°C. As with any antibody avoid repeat freeze-thaw cycles.
Note	For research use only
Application notes	MSI2 antibody can be used for detection of MSI2 by ELISA at 1:1562500. MSI2 antibody can be used for detection of MSI2 by western blot at 1.25 µg/mL, and HRP conjugated secondary antibody should be diluted 1:50,000 - 100,000.
Clonality	Polyclonal
MW	36 kDa, 28 kDa
Uniprot ID	Q96DH6
NCBI	NP_620412
Dilution Range	MSI2 antibody can be used for detection of MSI2 by ELISA at 1:1562500. MSI2 antibody can be used for detection of MSI2 by western blot at 1.25 µg/mL, and HRP conjugated secondary antibody should be diluted 1:50,000 - 100,000.
Expiration Date	12 months from date of receipt.



Antibody used in IHC on Human Liver at 4...



Antibody used in IHC on Human Heart at 4...



Antibody used in WB on Human HepG2 at 1....