

---

## Product Datasheet

### GNB1L Antibody (orb1241911)

**Description**

GNB1L Antibody

**Species/Host**

Rabbit

**Reactivity**

Human, Mouse, Rat

**Conjugation**

Unconjugated

**Tested Applications**

ELISA, IHC, WB

**Immunogen**

Antibody produced in rabbits immunized with a synthetic peptide corresponding a region of human GNB1L.

**Target**

GNB1L

**Preservatives**

Purified antibody supplied in 1x PBS buffer with 0.09% (w/v) sodium azide and 2% sucrose.

**Form/Appearance**

Liquid

**Concentration**

batch dependent

**Storage**

For short periods of storage (days) store at 4°C. For longer periods of storage, store GNB1L antibody at -20°C. As with any antibody avoid repeat freeze-thaw cycles.

**Note**

For research use only

**Application notes**

GNB1L antibody can be used for detection of GNB1L by ELISA at 1:12500. GNB1L antibody can be used for detection of GNB1L by western blot at 2.5 µg/mL, and HRP conjugated secondary antibody should be diluted 1:50,000 - 100,000.

**Clonality**

Polyclonal

**MW**

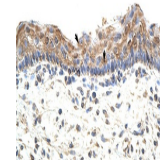
36 kDa

**Uniprot ID**
[Q9BYB4](#)
**NCBI**
[NP\\_443730](#)
**Dilution Range**

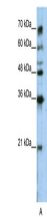
GNB1L antibody can be used for detection of GNB1L by ELISA at 1:12500. GNB1L antibody can be used for detection of GNB1L by western blot at 2.5 µg/mL, and HRP conjugated secondary antibody should be diluted 1:50,000 - 100,000.

**Expiration Date**

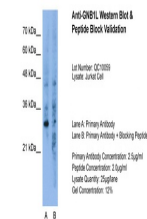
12 months from date of receipt.



Antibody used in IHC on Human Skin at 4...



Antibody used in WB on Human Jurkat 2.5 ...



Antibody used in WB on Jurkat 2.5 ug/ml ...