

---

## Product Datasheet

### BHMT Antibody (orb1241882)

**Description**

BHMT Antibody

**Species/Host**

Rabbit

**Reactivity**

Canine, Human, Mouse, Rat

**Conjugation**

Unconjugated

**Tested Applications**

ELISA, IHC, WB

**Applications**
**Immunogen**

Antibody produced in rabbits immunized with a synthetic peptide corresponding a region of human BHMT.

**Target**

BHMT

**Preservatives**

Purified antibody supplied in 1x PBS buffer with 0.09% (w/v) sodium azide and 2% sucrose.

**Form/Appearance**

Liquid

**Concentration**

batch dependent

**Storage**

For short periods of storage (days) store at 4°C. For longer periods of storage, store BHMT antibody at -20°C. As with any antibody avoid repeat freeze-thaw cycles.

**Note**

For research use only

**Application notes**

BHMT antibody can be used for detection of BHMT by ELISA at 1:312500. BHMT antibody can be used for detection of BHMT by western blot at 2.5 µg/mL, and HRP conjugated secondary antibody should be diluted 1:50,000 - 100,000.

**Clonality**

Polyclonal

**MW**

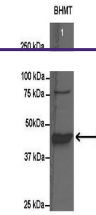
45 kDa

**Uniprot ID**
[Q93088](#)
**NCBI**
[NP\\_001704](#)
**Dilution Range**

BHMT antibody can be used for detection of BHMT by ELISA at 1:312500. BHMT antibody can be used for detection of BHMT by western blot at 2.5 µg/mL, and HRP conjugated secondary antibody should be diluted 1:50,000 - 100,000.

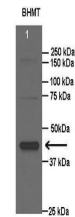
**Expiration Date**

12 months from date of receipt.



See Immunoblot Data and Customer Feedback for more information

Antibody used in WB on Rat liver at 1:10...



See Immunoblot Data and Customer Feedback for more information

Antibody used in WB on Rat liver at 1:2...



Antibody used in WB on Human Fetal Liver...