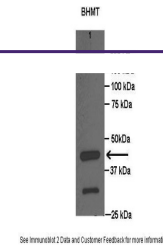
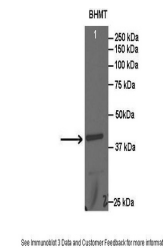

Product Datasheet

BHMT Antibody (orb1241881)

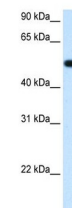
Description	BHMT Antibody
Species/Host	Rabbit
Reactivity	Canine, Human
Conjugation	Unconjugated
Tested Applications	ELISA, IHC, WB
Immunogen	Antibody produced in rabbits immunized with a synthetic peptide corresponding a region of human BHMT.
Target	BHMT
Preservatives	Purified antibody supplied in 1x PBS buffer with 0.09% (w/v) sodium azide and 2% sucrose.
Form/Appearance	Liquid
Concentration	batch dependent
Storage	For short periods of storage (days) store at 4°C. For longer periods of storage, store BHMT antibody at -20°C. As with any antibody avoid repeat freeze-thaw cycles.
Note	For research use only
Application notes	BHMT antibody can be used for detection of BHMT by ELISA at 1:312500. BHMT antibody can be used for detection of BHMT by western blot at 1.25 µg/mL, and HRP conjugated secondary antibody should be diluted 1:50,000 - 100,000.
Clonality	Polyclonal
MW	45 kDa
Uniprot ID	Q93088
NCBI	NP_001704
Dilution Range	BHMT antibody can be used for detection of BHMT by ELISA at 1:312500. BHMT antibody can be used for detection of BHMT by western blot at 1.25 µg/mL, and HRP conjugated secondary antibody should be diluted 1:50,000 - 100,000.
Expiration Date	12 months from date of receipt.



Antibody used in WB on Rat liver at 1:10...



Antibody used in WB on Rat liver at: 1:2...



Antibody used in WB on Human Fetal Liver...