

---

## Product Datasheet

### ANAPC7 Antibody (orb1241861)

**Description**

ANAPC7 Antibody

**Species/Host**

Rabbit

**Reactivity**

Canine, Human, Mouse

**Conjugation**

Unconjugated

**Tested**

ELISA, IHC, WB

**Applications**

Antibody used in WB on Human Jurkat 0.2-...

**Immunogen**

Antibody produced in rabbits immunized with a synthetic peptide corresponding a region of human ANAPC7.

**Target**

ANAPC7

**Preservatives**

Purified antibody supplied in 1x PBS buffer with 0.09% (w/v) sodium azide and 2% sucrose.

**Form/Appearance**

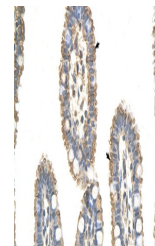
Liquid

**Concentration**

batch dependent

**Storage**

For short periods of storage (days) store at 4°C. For longer periods of storage, store ANAPC7 antibody at -20°C. As with any antibody avoid repeat freeze-thaw cycles.



Antibody used in IHC on Human Intestine ...

**Note**

For research use only

**Application notes**

ANAPC7 antibody can be used for detection of ANAPC7 by ELISA at 1:62500. ANAPC7 antibody can be used for detection of ANAPC7 by western blot at 0.5 µg/mL, and HRP conjugated secondary antibody should be diluted 1:50,000 - 100,000.

**Clonality**

Polyclonal

**MW**

62 kDa

**Uniprot ID**
[Q9UJX3](#)
**NCBI**
[NP\\_057322](#)
**Dilution Range**

ANAPC7 antibody can be used for detection of ANAPC7 by ELISA at 1:62500. ANAPC7 antibody can be used for detection of ANAPC7 by western blot at 0.5 µg/mL, and HRP conjugated secondary antibody should be diluted 1:50,000 - 100,000.

**Expiration Date**

12 months from date of receipt.